

INSTALLATION INSTRUCTIONS

WALL PROTECTORS

TEC 093 / TEC 127 / TEC 267

PRESENTATION

The system is composed of high impact wall protector, attachment base, finishing terminals and adaptors. The system must be attached with self-lapping screws Ø 3.5 x 8.5 mm and Ø 3.5 x 25 mm with plastic bushings Ø 5 mm. (Screws and bushings are not supplied with the system). To finish the internal curves, we suggest cutting it with a half mitre; which ensures an excellent finish of the product.

APPLICATIONS

The wall protector system can be installed on masonry walls, concrete blocks, precast panels, wood and steel structures. To install the system in Dry Wall type constructions, consult the manufacturer or assembler, as there is a need for internal reinforcement with wood or steel to properly attach it.

REQUIRED TOOLS

- Drill, screwdriver, measuring tape, level.
- Carbide tip concrete drill Ø 5 mm.
- Quick steel drill Ø 5 mm.
- Polyout Saw or 1/2 mitre saw.

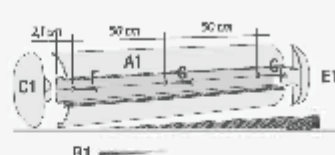
Do not expose products developed for internal use directly to sunlight.

WALL PROTECTOR SET INSTALLATION - TEC 267



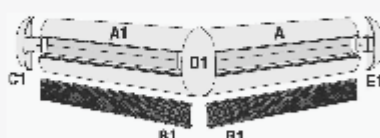
- 1 Cut the part (A1) according to the measurements of the application site.

Figure 1



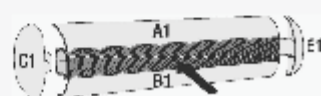
- 2 Using the wall protector (A1) itself as a template, make the holes at the desired height, respecting the maximum distance of holes at the desired height, respecting the maximum distance of 50 cm between the fixing points, according to figure 1.

Figure 2



- 3 The left and right terminals (C1, E1) and 90° elbow must be attached along with the attachment base (A1), as shown in figure 2.

Figure 3



- 4 To complete the installation, close the wall protector groove (A1) with the groove cover profile (B1) pressing until it locks, as shown in figure 3.

WALL PROTECTOR SET INSTALLATION - TEC 093



A2

Rigid high impact
PVC wall protector



B2

Attachment base
Rigid PVC



C2

Left
terminal



D2

Right
terminal



E2

90° Elbow

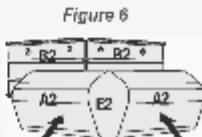
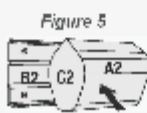
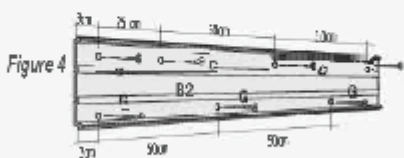
G
Screw Ø 3.5 x 9.5
H
Bushing Ø 5mm

1 Cut the parts (A2) and (B2) according to the measurements of the application site.

2 Using the attachment base (B2) itself as a template, make the holes at the desired height, respecting the maximum distance between the fixing points, according to figure 4

3 To fit the left terminal (C2), right terminal (D2) and the 90° elbow (E2), simply fit the wall protector profile (A2) before pressing against the attachment base (B2). These terminals, because they are fitted under pressure, do not require screws, according to figures 5 and 6

To complete the installation, fit the wall protector profile (A2) into the attachment base profile (B2).



WALL PROTECTOR SET INSTALLATION - TEC 127



A3

Rigid high impact PVC
wall protector



B3

Attachment base rigid
PVC



C3

terminal



D3

90° Straight elbow

F
Screw Ø3.5x9.5mm
G
Screw 3.15x25mm
H
Bushing Ø 5mm

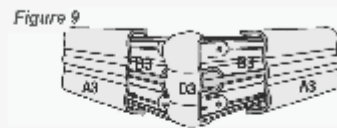
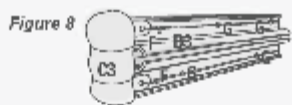
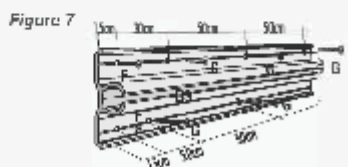
1 Cut the parts (A3) and (B3) according to the measurements of the application site.

2 Using the attachment base (B3) itself as a template, make the holes at the desired height, obeying the spacing, according to figure 7.
Note: In cases where there are no terminals, drilling (F) is not necessary.

3 The left and right terminals (C3) must be attached along with the attachment base (B3), as shown in figure 8.

4 To finish the external 90° curve 90° External Curve simply fix the straight 90° elbow (D3) on the base profile (B3) before placing the wall protector (A3) according to figure 9;

5 To complete the installation, press the wall protector profile (A3) against the attachment base (B3), which already has the fixed terminals (C3), as shown in figure 10.



If you have any questions, please contact us



Rua Rui Barbosa, 210 | Costa e Silva
Distrito Industrial | CEP 89219-520
Joinville | SC | Fone 47 3431.1200



+55 47 98405.3630
www.tecnoperfil.com.br

June 2013