



Transforming plastic into solutions

A faint, light gray line drawing of an industrial facility is visible in the background. It includes various structures such as storage tanks, pipes, and buildings, suggesting a manufacturing or processing plant.

**INDUSTRIAL CATALOG**



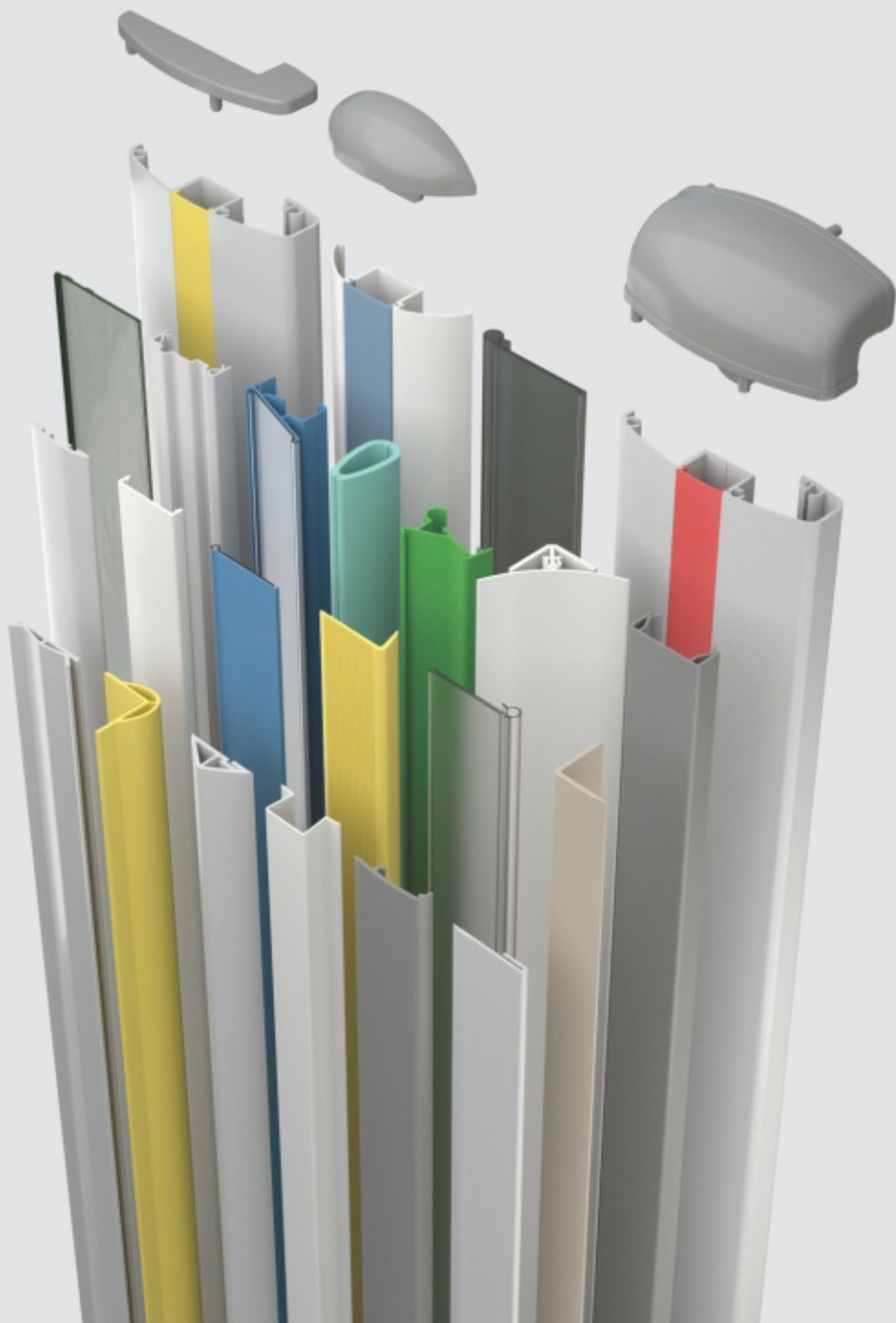
### **Tecnooperfil®: transforming plastic into solutions**

Founded in 1994, Tecnooperfil Plásticos was born with the objective of presenting the market innovation and high quality in plastic profiles, especially using PVC.

With over 27 years of experience, the company develops solutions for civil construction, industries, services and hydroponic cultivation. Among the main products on Tecnooperfil's line are Vinylshock wall, handrail and stretcher protectors, corner guard, finishing profiles for ceramic tiles, profiles for refrigeration, label holders, electronic tracks, check-out profiles, and products for HortivinyL hydroponics. The company also develops customized technical profiles according to the customer's needs and prepares profile projects for the most varied purposes.

The organization relies on highly specialized production technology and uses the best raw materials, used worldwide and able to be 100% recycled. The technical staff of specialists has made use of modern resources, allowing for high performance tools and compounds to be developed, advising customers in the conception and improvement of the items to be manufactured.

In addition, the company is concerned about being up-to-date with the best administrative and commercial management tools and practices.



## INDUSTRIAL SOLUTIONS

In addition its extensive product portfolio, TecnoPerfil develops customized profiles tailored to the needs and technical specifications of each customer.

**High Quality and reliability for your project!**

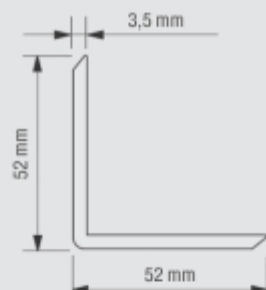
- Security in the confidentiality of projects
- On-time delivery;
- Production allowing continuity in the manufacturing process;
- Logistics aimed at meeting deadlines and preserving products;
- After-sales with technical assistance;
- Compliance with Normative Requirements.

# CORNER GUARDS

## Equal Flap Overlapping Corner Guards

### TEC 009

52 mm x 52 mm



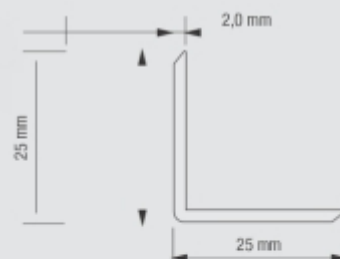
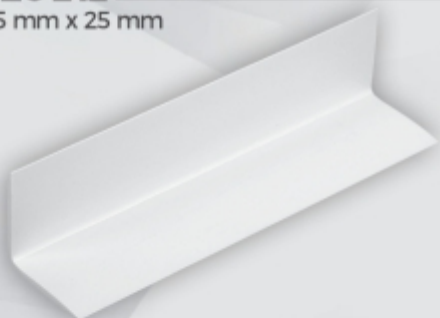
#### COLORS

○ White 103    ● Beige 778    ● Light Blue 467    ● Medium Blue 409  
 ● Dark Blue 411    ● Marfil 303    ● Gray 637    ● Green 288

## Equal Flap Overlapping Corner Guards

### TEC 242

25 mm x 25 mm



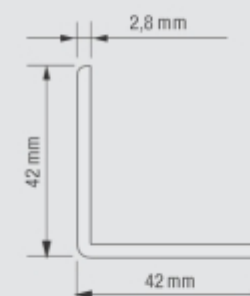
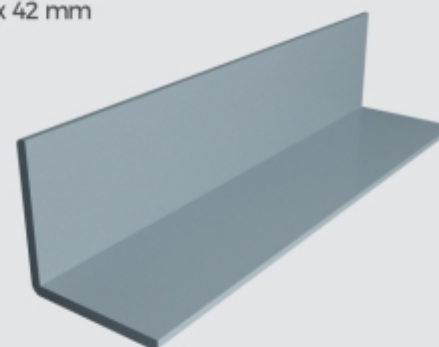
#### COLORS

○ White 103    ● Beige 778    ● Light Blue 467    ● Medium Blue 409  
 ● Dark Blue 411    ● Marfil 303    ● Gray 637    ● Green 288

## Equal Flap Overlapping Corner Guards

### TEC 029

42 mm x 42 mm



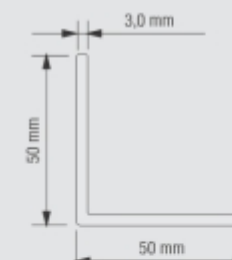
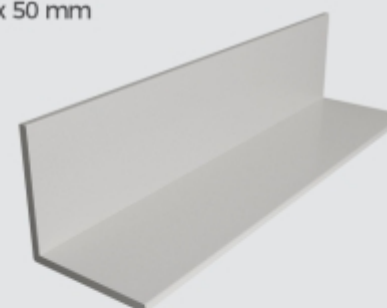
#### COLORS

○ White 103    ● Beige 778    ● Light Blue 467    ● Medium Blue 409  
 ● Dark Blue 411    ● Marfil 303    ● Gray 637    ● Green 288

## Cantoneira de Sobrepor Abas Iguais

### TEC 216

50 mm x 50 mm



#### CORES

○ White 103    ● Gray 637  
 Other colors upon request

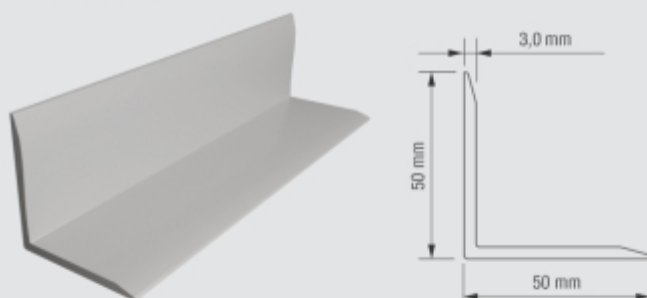


# CORNER GUARDS

## Equal Flap Overlapping Corner Guards

### TEC 229

50 mm x 50 mm



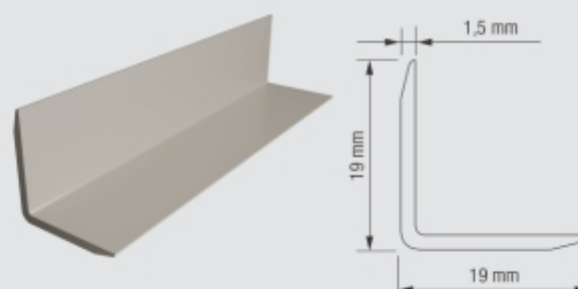
#### COLORS

○ White 103    ● Gray 637  
Other colors upon request.

## Equal Flap Overlapping Corner Guards

### TEC 241

19 mm x 19 mm



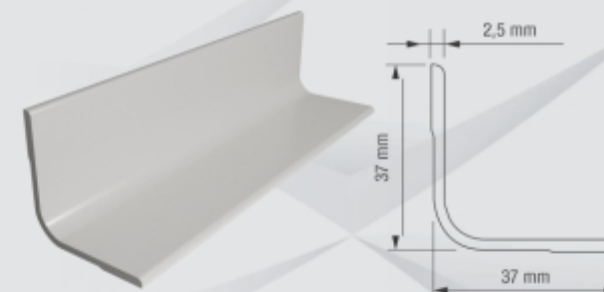
#### COLORS

○ White 103    ● Beige 778    ● Green 288  
● Dark Blue 411    ● Marfil 303    ● Gray 637  
● Light Blue 467    ● Medium Blue 409

## Equal Flap Overlapping Corner Guards

### TEC 258

37 mm x 37 mm



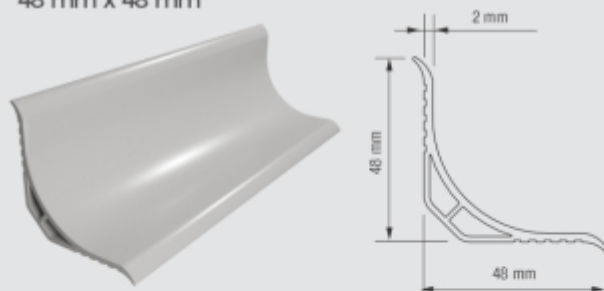
#### COLORS

○ White 162    ● Gray 637  
Other colors upon request.

## Overlapping Inner Corner

### TEC 188

48 mm x 48 mm



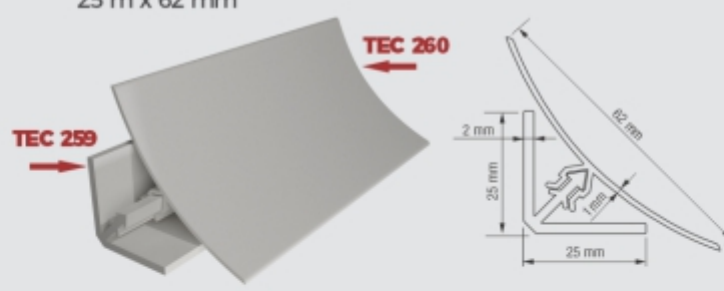
#### COLORS

○ White 184    ● Marfil 374    ● Gray 651

## Overlapping Inner Corner

### TEC 259 | TEC 260

25 mm x 62 mm



#### COLORS

TEC 260  
○ White 108    ● Gray 600

#### TEC 259

○ White 108    ● Gray 600

## Overlapping Inner Corner

### TEC 309

75 mm x 48 mm



#### COLORS

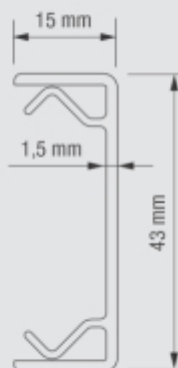
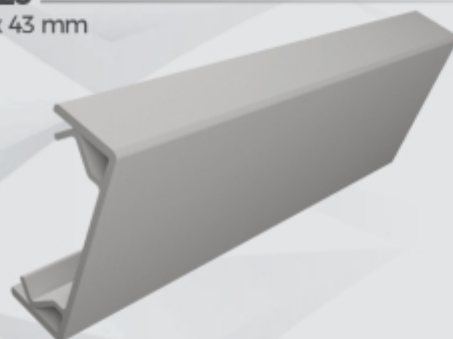
○ White 184    ● Marfil 374    ● Gray 651

# REFRIGERATION PROFILES

## Frame Profile

### TEC 020

15 mm x 43 mm



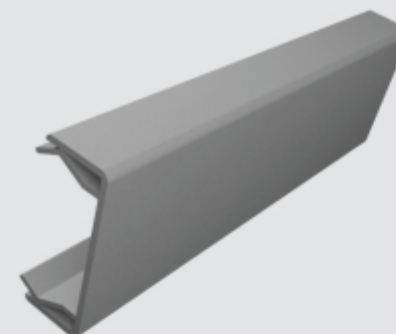
#### COLORS

○ White 108   ● Gray 669

## Frame Profile

### TEC 252

13 mm x 35 mm



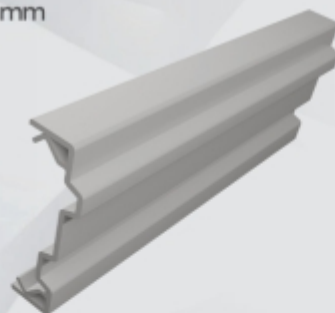
#### COLORS

○ White 108   ● Gray 669

## Frame Profile

### TEC 021

15 mm x 58 mm



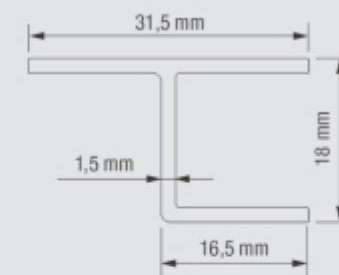
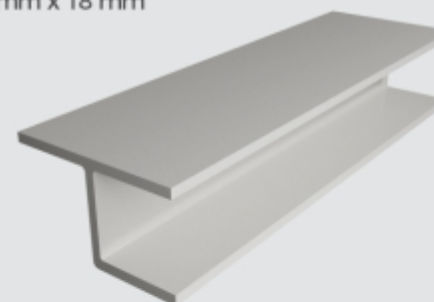
#### COLORS

○ White 184   ● Gray 608

## Night Cover Profile

### TEC 080

31,5 mm x 18 mm



#### COLORS

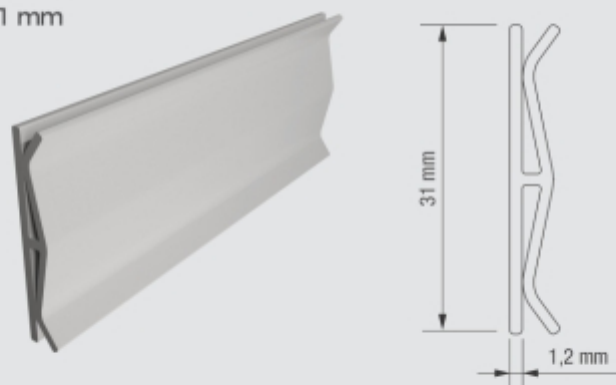
● Beige 388   ● Gray 667

# REFRIGERATION PROFILES

## Sheet Splice Profile

### TEC 171

1,2 mm x 31 mm



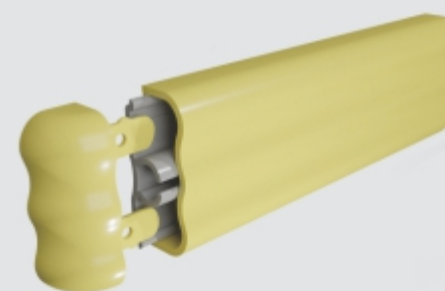
#### COLORS

○ White 108 ● Gray 619

## Bumper Profiles

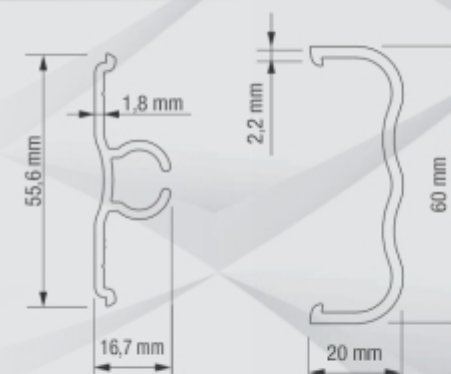
### TEC 126 e TEC 127

16,7 mm x 55,6 mm 20 mm x 60 mm



#### COLORS

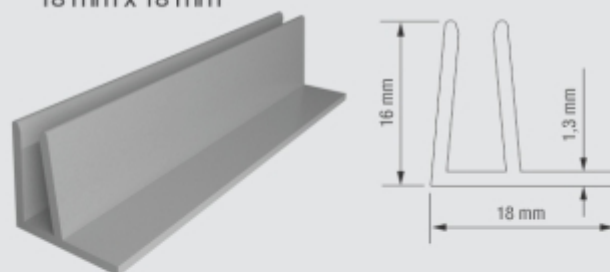
● Gray 637



## Sliding Profile for Glass

### TEC 248

18 mm x 18 mm



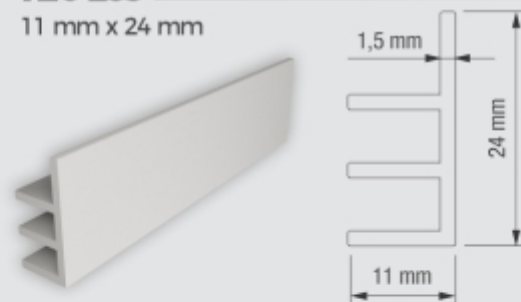
#### COLORS

● Gray 663 ● Gray 610 ○ Crystal

## Double Lower Sliding Profile

### TEC 255

11 mm x 24 mm



#### COLORS

○ White 108 ● Gray 663

## Double Lower Sliding Profile

### TEC 256

18 mm x 24 mm



#### COLORS

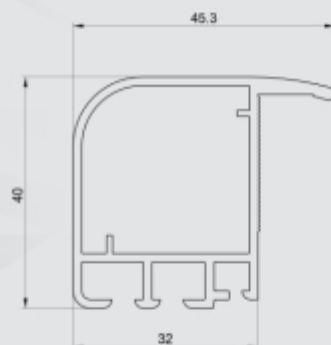
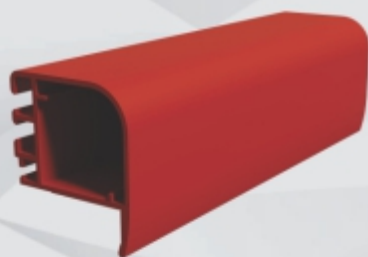
○ White 108 ● Gray 663

# REFRIGERATION PROFILES

## Package Holder Frame Profile

### TEC 340

Por encomenda



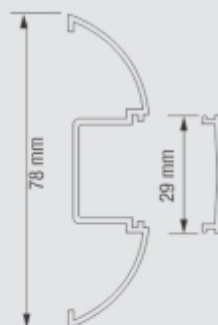
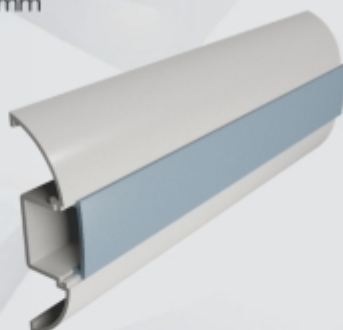
#### COLORS

By order

## Bumper Profile

### TEC 267

25 mm x 25 mm



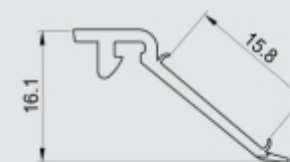
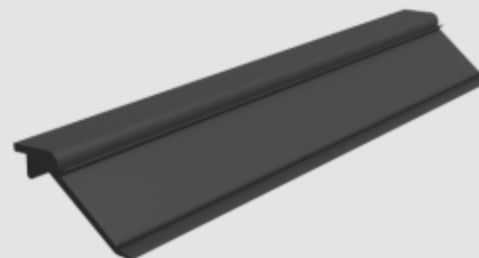
#### COLORS

● Gray 619

## Click Profile

### TEC 341

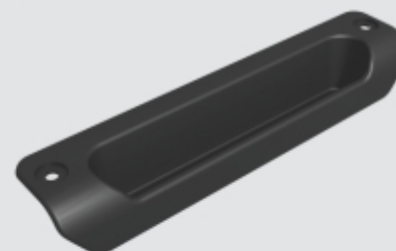
Por encomenda



#### COLORS

● Black 952

## HANDLE



#### COLORS

● Black 900

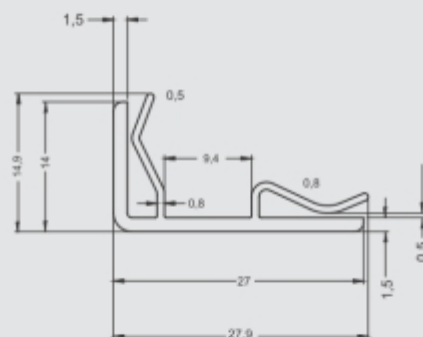
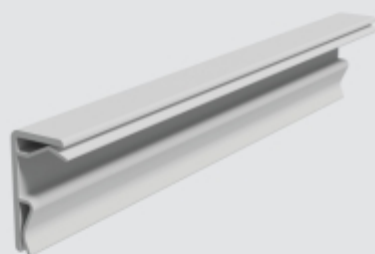


# REFRIGERATION PROFILES

## Thermal Edge Profile

### TEC 376

14 mm x 27 mm



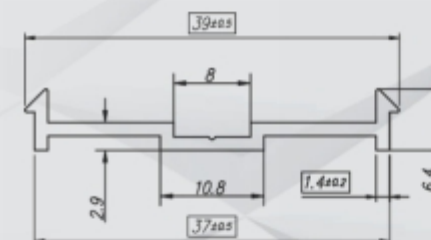
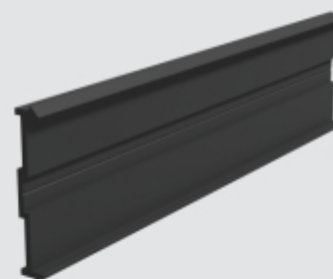
#### COLORS

○ White 163    ● Gray 651

## Bumper Base Profile 50 mm

### TEC 055

Comprimento de 4 metros



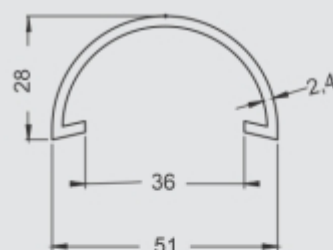
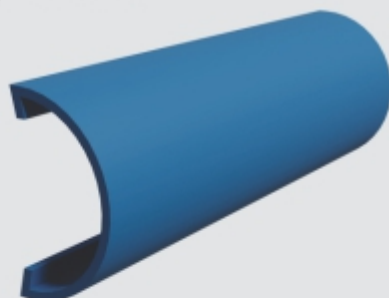
#### COLORS

● Black 928

## Bumper Profile

### TEC 054

Length of 4 meters



#### COLORS

○ White 103    ● Beige 778    ● Light Blue 467    ● Medium Blue 409  
● Dark Blue 411    ● Gray 637    ● Green 288



## **LABEL HOLDERS, PRICE TAG HOLDERS, PEG BOARD/ HANG-TAG ATTACHMENTS**

Used in supermarkets, pharmacies, construction material stores, self services and in commerce in general, the price tag or label holders decorates gondola shelves and shelves and are used to inform price, details and codes about the products on display.

Resistant and functional, the profiles are produced in several colors and sizes.

Decorative and functional, Tecnoperfil Label and Price Tag Holder catch the eye of customers with a wide variety of profiles, for the most diverse shelf models available in the market. Ideal for visual communication projects in stores.

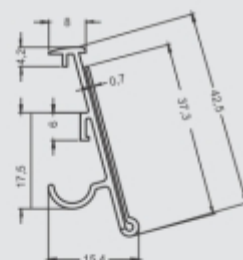
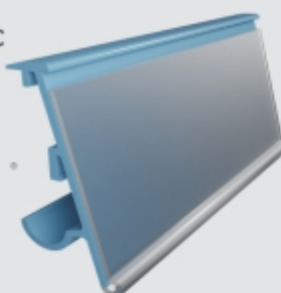
## Label Holders, Price Tag Holders, Peg Board/Hang-Tag Attachments

Used in gondola shelves and shelves in general in: pharmacies, supermarkets, convenience stores, warehouses, pallet racks and department stores in general.

### TEC 025

LABEL HOLDER WITH CRYSTAL DISPLAY IN PVC 38mm

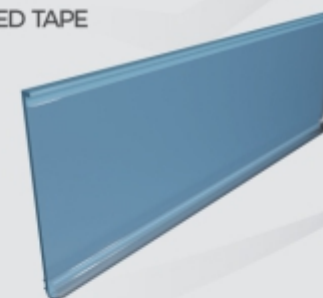
APPLICATIONS  
Refrigerated counters;  
and older Eletrofrío  
gondola shelf models



### TEC 030

LABEL HOLDER WITH CRYSTAL DISPLAY AND DOUBLE SIDED TAPE 35mm

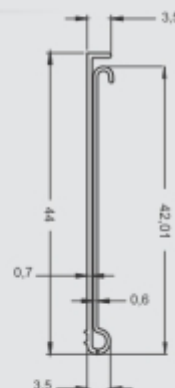
APPLICATIONS  
Refrigerated  
islands and flat  
banners.



### TEC 285

LABEL HOLDER WITH CRYSTAL DISPLAY AND DOUBLE SIDED TAPE 44mm

APPLICATIONS  
Refrigerated islands and  
flat banners.



### SUPER TEC 480

LABEL HOLDER WITH CRYSTAL DISPLAY AND DOUBLE SIDED TAPE 80 mm

APPLICATIONS  
Wholesale and Retail  
in general.



#### COLORS

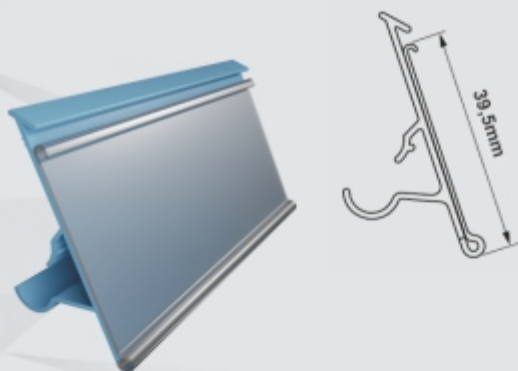
● Light Green 204    ● Green 206    ● Green 226    ● Light Blue 424    ● Blue 404    ● Blue 432    ● Black 900    ○ Crystal 000  
● White 108    ● Gray 604    ● Orange 506    ● Red 804    ● Yellow 304    ● Yellow 310

## Label Holders, Price Tag Holders, Peg Board/Hang-Tag Attachments

Used in gondola shelves and shelves in general in: pharmacies, supermarkets, convenience stores, warehouses, pallet racks and department stores in general.

### TEC 257

LABEL HOLDER WITH  
CRYSTAL DISPLAY IN PVC  
39,5 mm

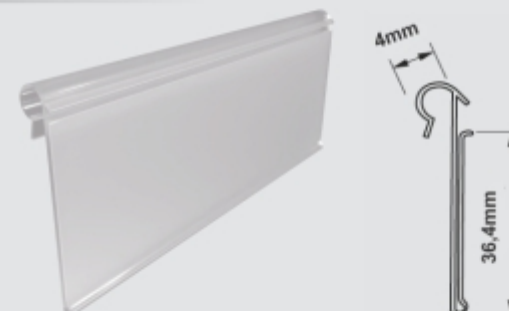


### TEC 263

HANG-TAG ATTACHMENT LABEL  
HOLDERS  
36,4mm

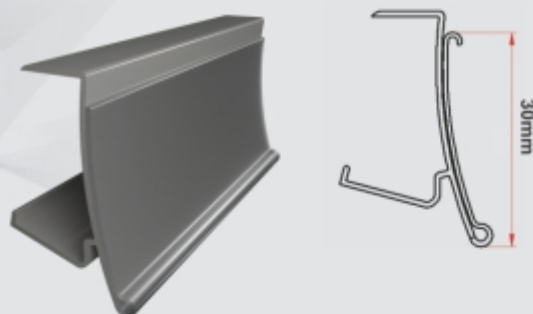
APPLICATIONS  
Hooks with 4mm wire. Available in  
sized 55mm, 75mm, 90 mm and  
110 mm.

Color available: CRYSTAL



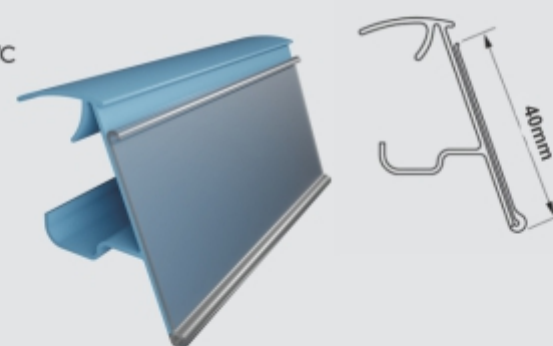
### TEC 265

LABEL HOLDER WITH  
CRYSTAL DISPLAY IN PVC  
30mm



### TEC 266

LABEL HOLDER WITH  
CRYSTAL DISPLAY IN PVC  
40 mm



#### COLORS

● Light Green 204   
 ● Green 206   
 ● Green 226   
 ● Light Blue 424   
 ● Blue 404   
 ● Blue 432   
 ● Black 900   
 ○ Crystal 000  
● White 108   
 ● Gray 604   
 ● Orange 506   
 ● Red 804   
 ● Yellow 304   
 ● Yellow 310



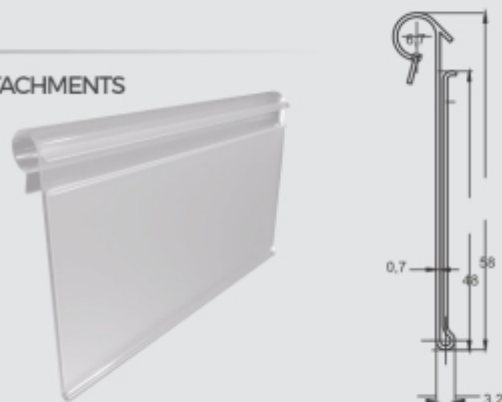
## TEC 287

LABEL HOLDERS FOR HANG-TAG ATTACHMENTS  
58mm

### APPLICATIONS

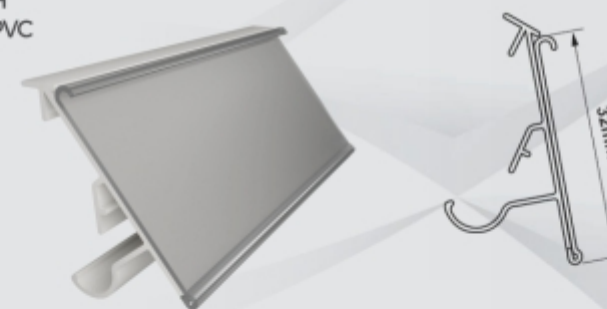
Hooks with 6mm wires.  
Available in sizes 55 mm, 75 mm,  
90 mm and 110mm.

Color available: CRYSTAL



## TEC 139

PLABEL HOLDER WITH  
CRYSTAL DISPLAY IN PVC  
32 mm

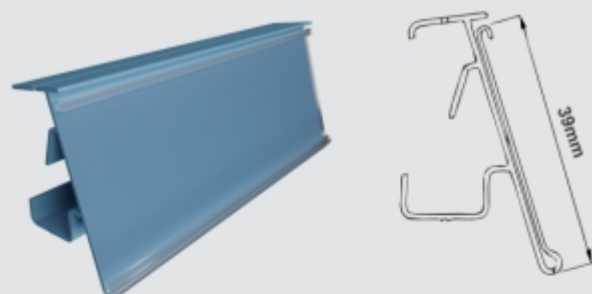


## Label Holder with Adjustments for Bulkheads

Used in gondola shelves and shelves in general in: pharmacies, supermarkets,  
convenience stores, warehouses, pallet racks and department stores in general

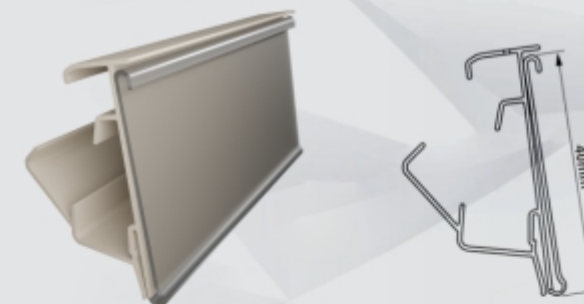
## TEC 152

LABEL HOLDER WITH  
ADJUSTMENT FOR  
BULKHEADS AND  
CRYSTAL DISPLAY  
39 mm



## TEC 201

LABEL HOLDER WITH  
ADJUSTMENT FOR  
BULKHEADS AND  
CRYSTAL DISPLAY  
40 mm



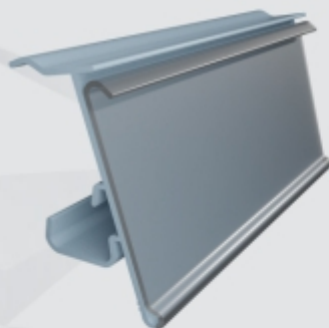
### COLORS

● Light Green 204    ● Green 206    ● Green 226    ● Light Blue 424    ● Blue 404    ● Blue 432    ● Black 900    ○ Crystal 000  
● White 108    ● Gray 604    ● Orange 506    ● Red 804    ● Salmon 512    ● Yellow 304    ● Yellow 310



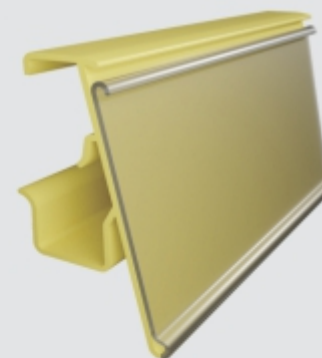
### TEC 322

LABEL HOLDER  
WITH ADJUSTMENT  
FOR BULKHEADS  
AND CRYSTAL  
DISPLAY  
38 mm



### TEC 325

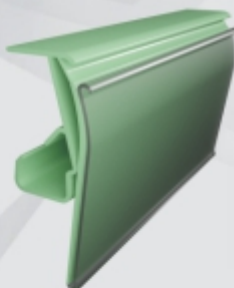
PLABEL HOLDER  
WITH ADJUSTMENT  
FOR BULKHEADS  
AND CRYSTAL  
DISPLAY  
40 mm



## Porta Etiquetas Basculantes

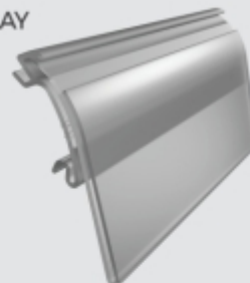
### TEC 247

TILTING LABEL  
HOLDER WITH  
CRYSTAL DISPLAY  
44,7 mm



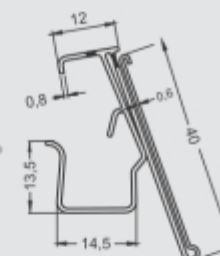
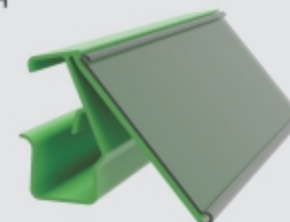
### TEC 146

TILTING LABEL  
HOLDER WITH  
CRYSTAL DISPLAY  
37,5 mm















### TEC 231

TILTING LABEL  
HOLDER WITH  
CRYSTAL  
DISPLAY  
40 mm  
By order.



#### COLORS

- |   |   |  |  |  |  |
|---|---|--|--|--|--|
|  Light Green 204 |  Green 206 |  Green 226  |  Light Blue 424 |  Blue 404   |  Blue 432   |
|  White 108       |  Gray 604  |  Orange 506 |  Red 804        |  Yellow 304 |  Yellow 310 |

## Electronic Label Tracks

Can be applied on New Gondola shelves / Counters in MDF using Double Sided Tape or Screw / Glass Shelf and Peg Board, exclusively suited for SEAL Electronic Labels. Its unique Tilt Adjustment system gives a better view in various positions. Used in gondola shelves and shelves in general in: pharmacies, supermarkets, convenience stores, warehouses, pallet racks and department stores in general.

### TEC 346

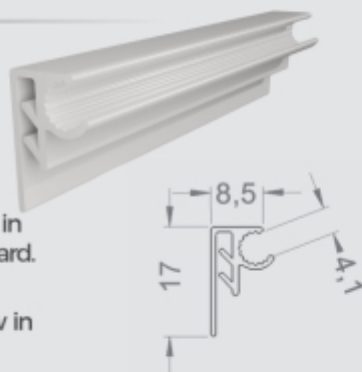
STRAIGHT BASE CLIP  
PROFILE FOR ELECTRONIC  
LABEL TRACKS

18 mm

APPLICATIONS

New gondola shelves, Counters in  
MDF, Glass Shelves and Peg Board.

System with exclusive tilt  
adjustment, giving a better view in  
various positions



#### COLORS

● Black 900 ○ Crystal 000 ● White 108 ● Gray 604

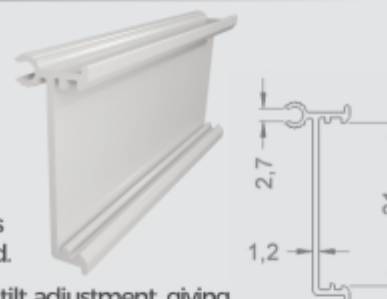
### TEC 347

PVC ELECTRONIC  
LABEL TRACKS  
31,5mm

APPLICATIONS

New gondola shelves,  
Counters in MDF, Glass  
Shelves and Peg Board.

System with exclusive tilt adjustment, giving  
a better view in various positions.



#### COLORS

● Black 900 ● White 108 ● Gray 604

### TEC 347 T

TRACK TERMINAL FOR  
ELECTRONIC LABELS  
39 mm

APPLICATIONS

Electronic Label Tracks  
for Gondola Shelf ends.

Finishing Electronic Label  
Tracks, in order to avoid  
accidents.



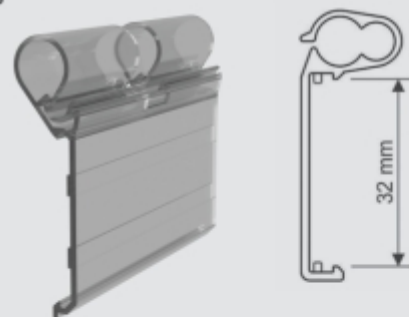
### TEC 401

PVC HANG-TAG ATTACHMENTS  
FOR ELECTRONIC LABELS  
70.59 mm

APPLICATIONS

Hooks with 4 to 10 mm  
wires.

Co-extrusion system in  
Flexible PVC. Available  
in sizes 55mm e70mm.



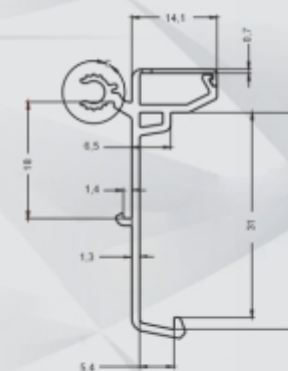
#### COLORS

○ Crystal 000

## Easy Lock Track with Holes Profile

### TEC 438

By order



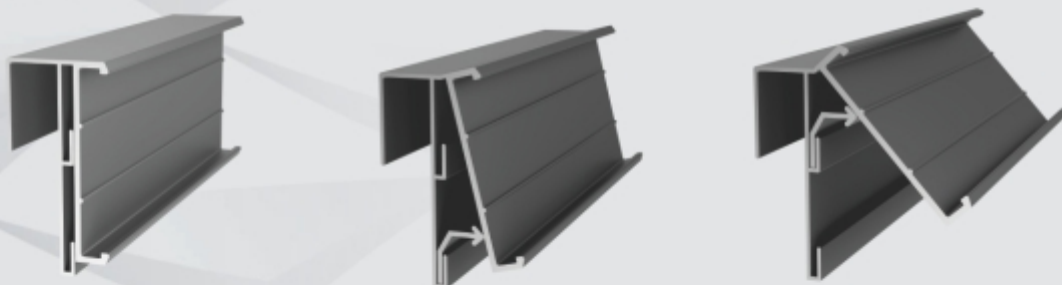
#### COLORS

● Black 900 ○ Crystal 000 ● White 108 ● Gray 604

## Track Profile

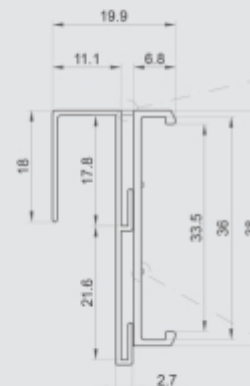
### TEC 458

By order.



#### COLORS

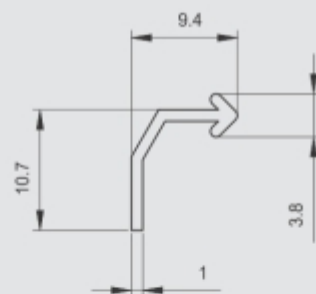
● Black 900   ● White 108   ● Gray 604



## Track Profile

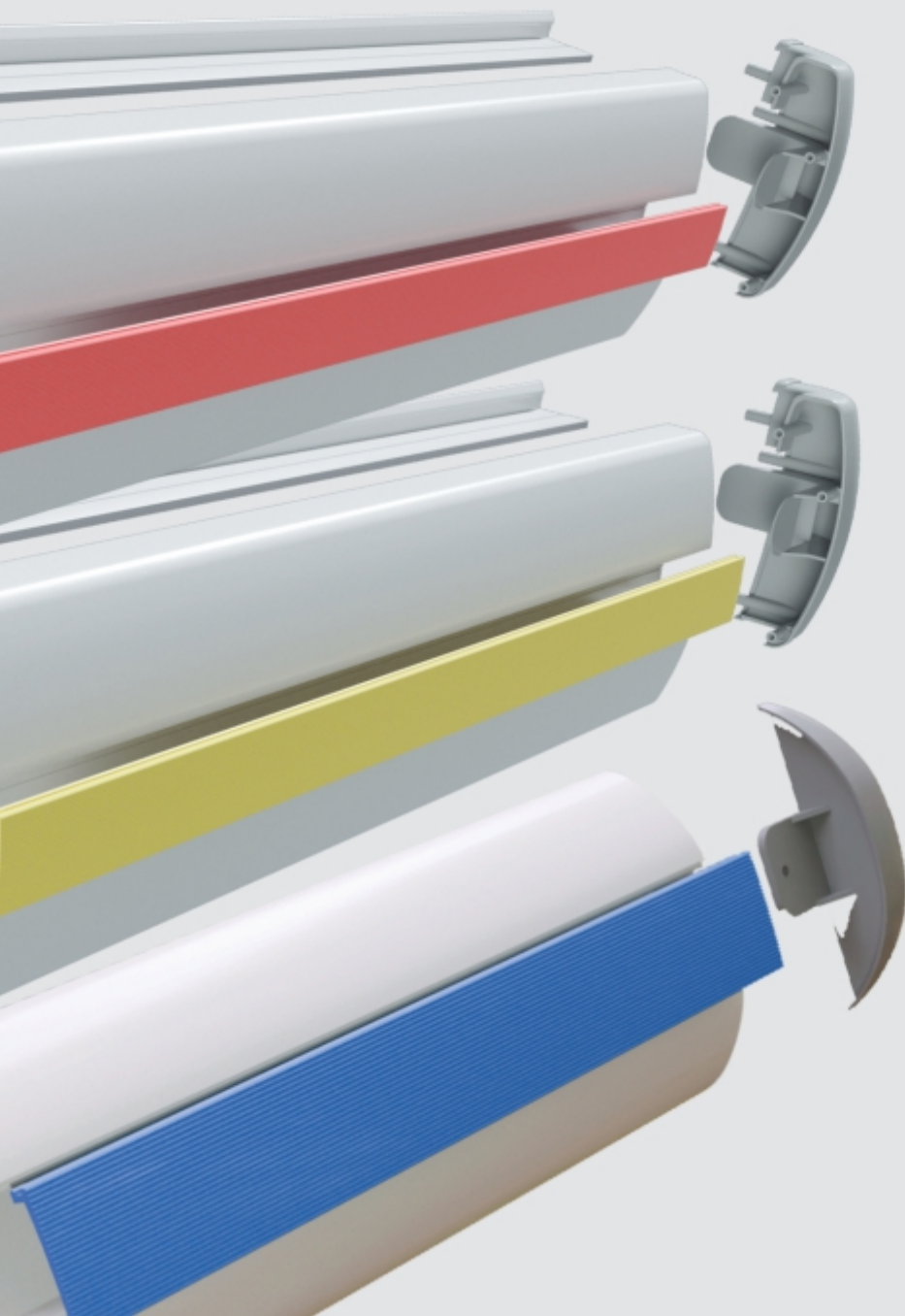
### TEC 459

By order.



#### COLORS

● Black 900   ○ Crystal 000   ● White 108   ● Gray 604



## SELF-CHECKOUT PROFILES

TecnoPerfil's system of self-checkout profiles has been developed to offer the market protection options for checkouts, self-checkout counters and refrigerated displays.

Formed by profiles, with a design combining beauty and practicality with easy assembly, they offer resistance against impacts, necessary for this type of installation.

Produced in rigid PVC with polypropylene accessories, they result in an excellent finish to match the equipment in which they are installed.

Easy installation and a variety of colors. Easy maintenance. Product resistant against humidity and does not propagate flames. Easy to clean and resistant against impacts.

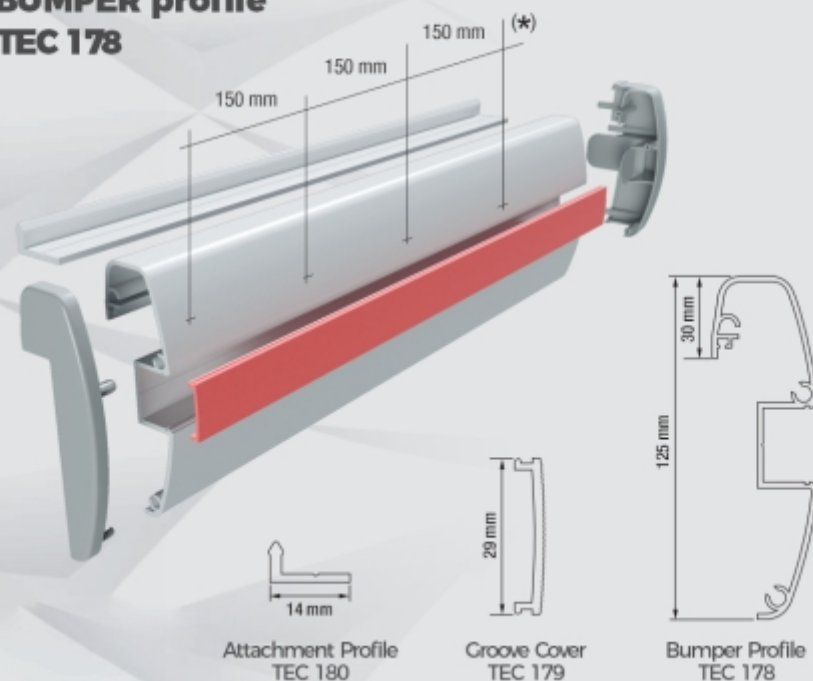


# SELF-CHECKOUT PROFILE SYSTEMS

## Check-Out Profiles

### BUMPER profile

TEC 178

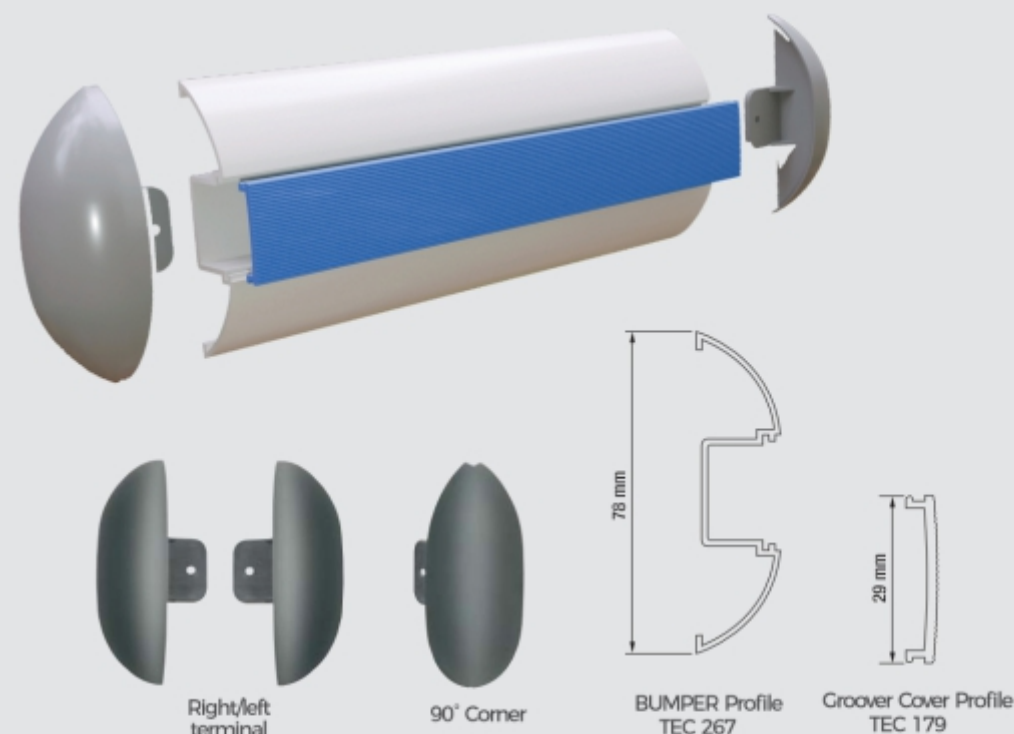


(\*) Recommended distance between holes and attachment of the product. Available length of 6m.

## Counter and Island Profiles

### BUMPER profile

TEC 267



## COLORS

● Gray 619

Accessories available in the color: ● Graphite 639

## Groove Cover Profile TEC 179

● Yellow 310 ● Blue 404 ● Red 804 ● Gray 639  
● Orange 506 ● Green 206 ● Blue 456 ● White 108



# BUS

## Central Roof Finishing Profile

### TEC 243

50 mm x 50 mm



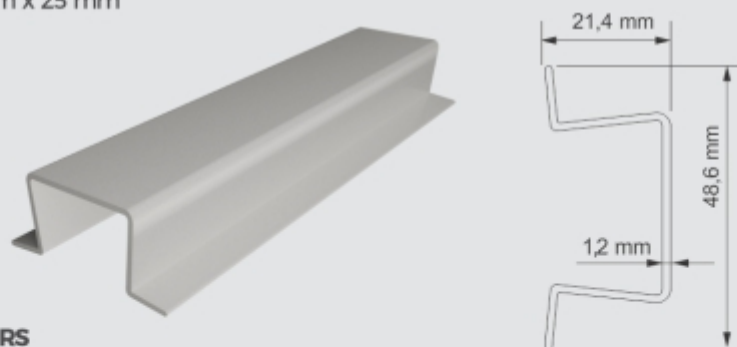
#### COLORS

Upon Request

## Urban Lateral Beam Profile

### TEC 245

25 mm x 25 mm



#### COLORS

Upon Request

## Barranco Gran Via Profile

### TEC 244

12,8 mm x 49,5 mm



#### COLORS

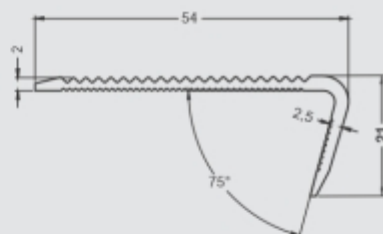
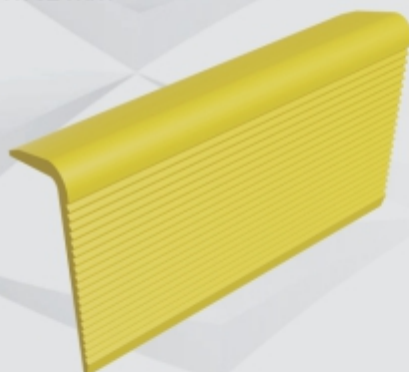
Upon Request

# FLEXIBLE PROFILES

## Flexible Step Profile

**TEC 900**

52 mm x 52 mm



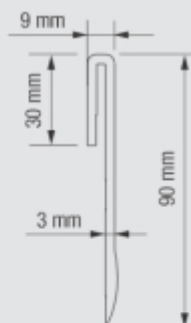
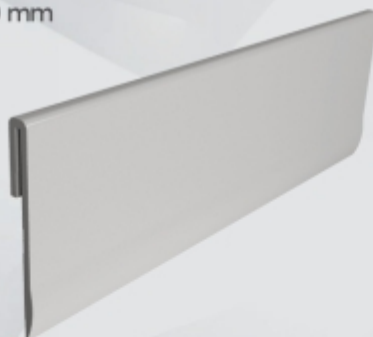
### COLORS

● Beige 711 ● Gray 623 ● Black 905 ● Yellow 301

## Flexible Bumper Profile

**TEC 903**

9 mm x 90 mm



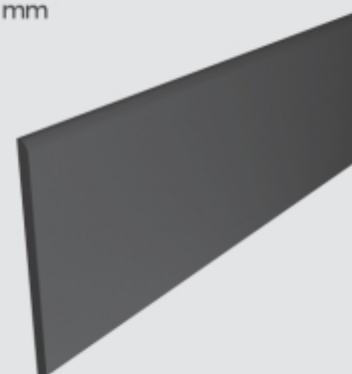
### COLORS

● Gray 605

## Flexible Gondola Shelf Finishing Profile

**TEC 901**

2,2 mm x 45 mm



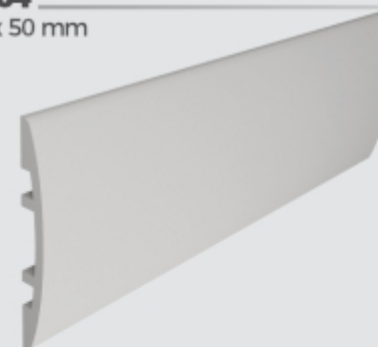
### COLORS

● Gray 605 ● Black 900

## Flexible Bumper Profile

**TEC 904**

50 mm x 50 mm



### COLORS

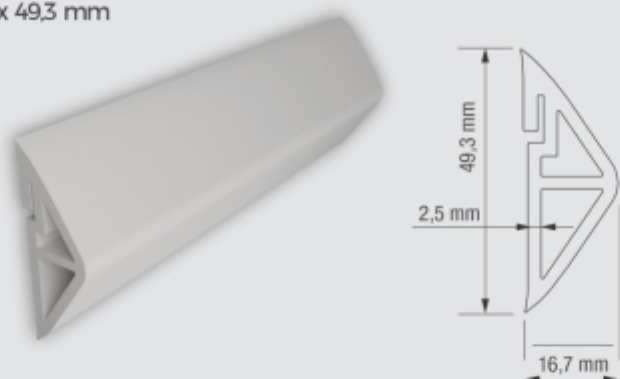
● Gray 605

# FLEXIBLE PROFILES

## Flexible Triangular Profile

### TEC 906

16,7 mm x 49,3 mm



#### COLORS

● Gray 619

## Flexible Corner Guard

### TEC 912

60 mm x 60 mm x 2,5mm



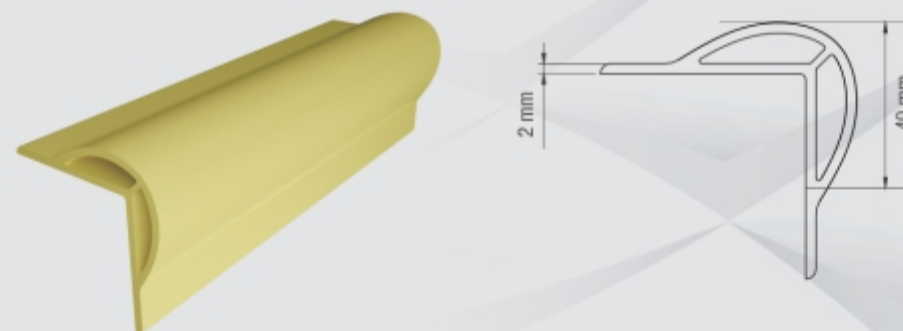
#### COLORS

○ White 107   ● Beige 711   ● Black 905   ● Yellow 301

## Flexible Corner Guard

### TEC 911

40 mm x 40 mm x 2 mm



#### COLORS

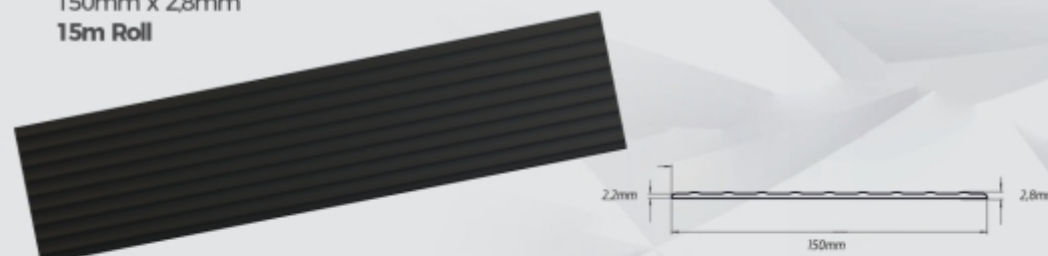
○ White 107   ● Beige 711   ● Black 905   ● Yellow 301

## Flexible Wall Protector

### TEC 913

150mm x 2,8mm

15m Roll



#### COLORS

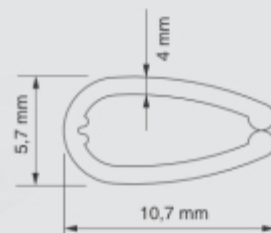
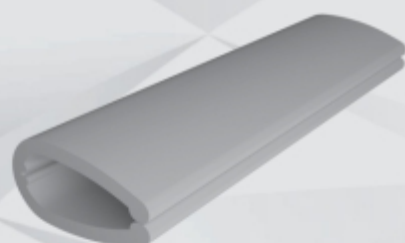
● Gray 635   ● Black 905

# MISCELLANEOUS PROFILES

## Finishing Profile

**TEC 039 TEC 040 TEC 041**

4 mm 7 mm 10 mm



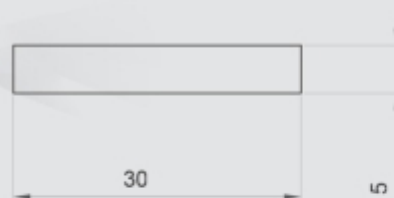
### COLORS

○ White118 ● Gray 610 ● Black 900

## Perfil Plano 30x5

**TEC 472**

By order.

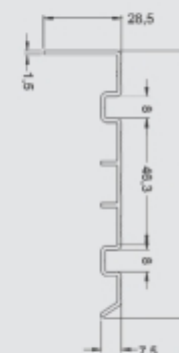
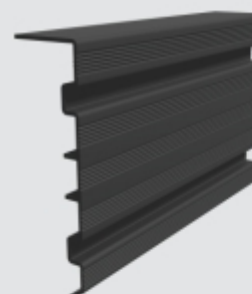


### COLORS

○ White 162

## Lateral Step Profile

**TEC 046 B**



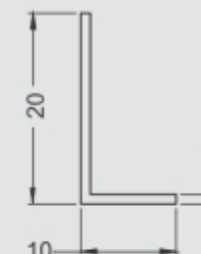
### COLORS

By order

## L Profile 20x10x1

**TEC 473**

By order.



### COLORS

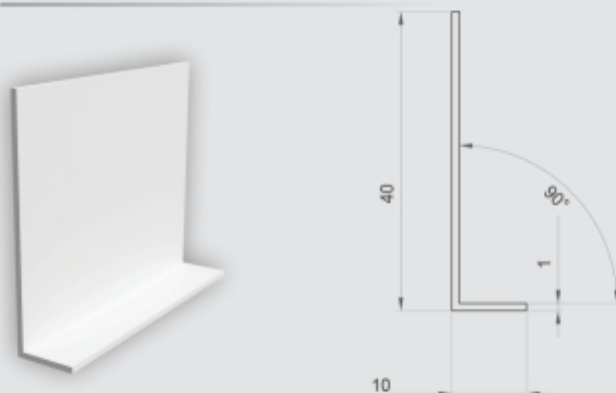
○ White162

## MISCELLANEOUS PROFILES

### L Profile 40x10x1

**TEC 474**

By order



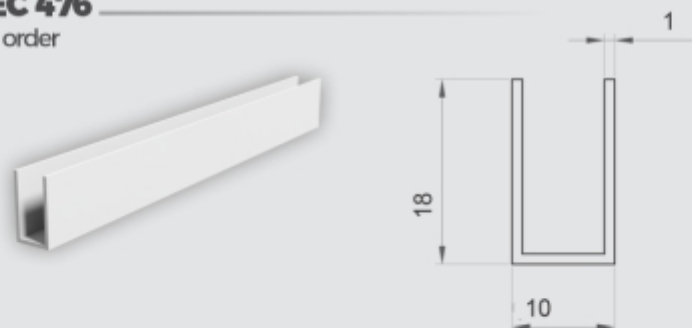
#### COLORS

☐ White 162

### U Profile 10x18x1

**TEC 476**

By order



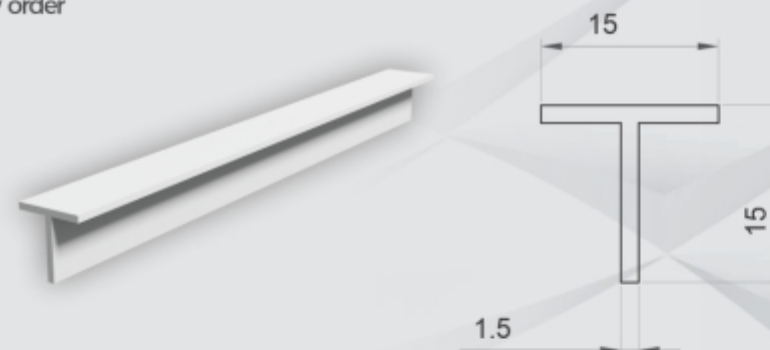
#### COLORS

☐ White 162

### PVC Profile 15x15x1

**TEC 475**

By order



#### COLORS

☐ White 162

### Flat Profile 17x3

**TEC 477**

By order



#### COLORS

☐ White 162



@tecnoperfil

Tecnoperfil Plásticos - Brasil

Tecnoperfil Plásticos

[www.tecnoperfil.com.br](http://www.tecnoperfil.com.br)



Street: Rui Barbosa, 210 | District: Costa e Silva | Distrito Industrial  
89219-520 | [exportação@tecnoperfil.com.br](mailto:exportação@tecnoperfil.com.br) | Joinville | SC

+55 47 8405 3630